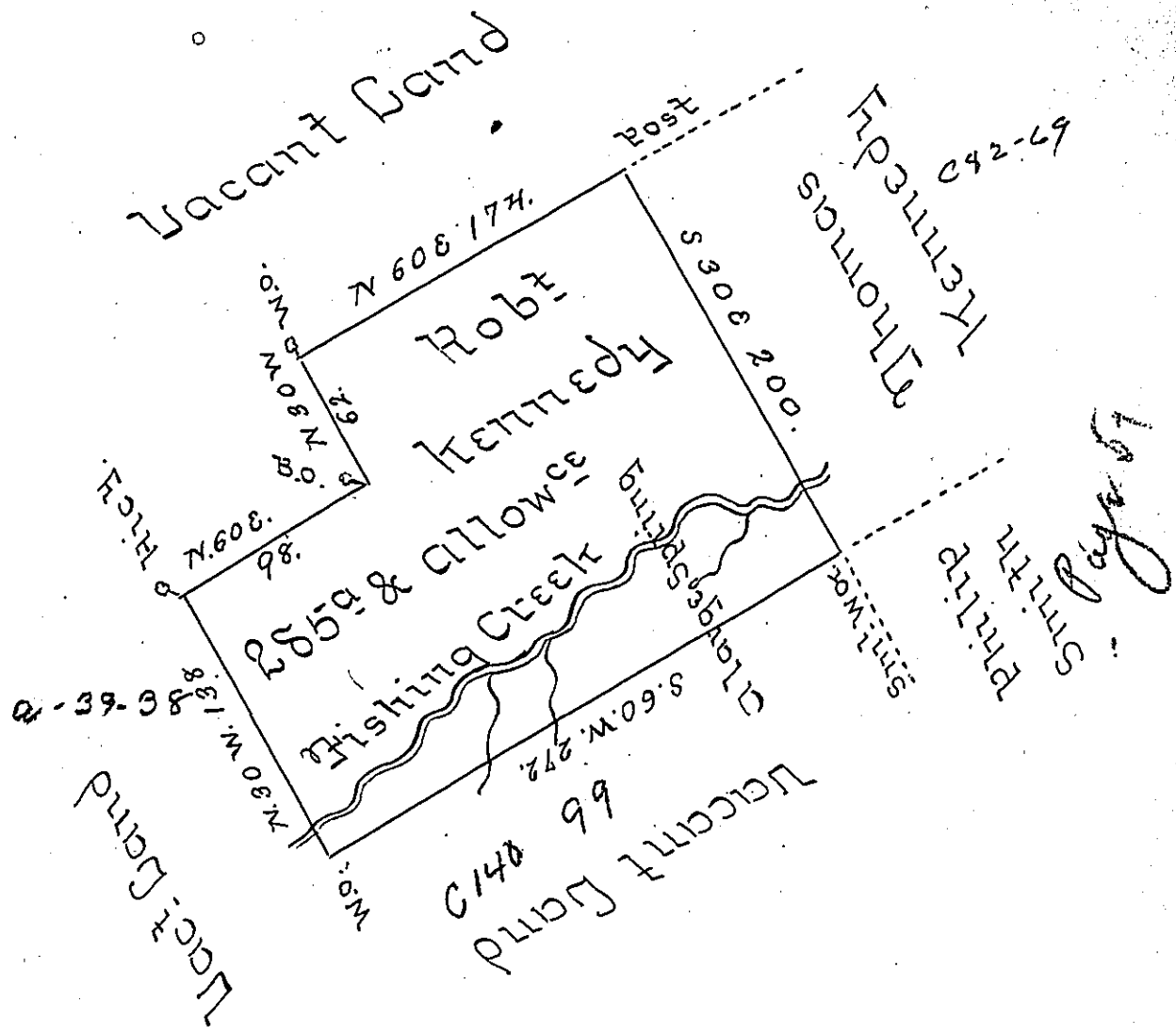


This note attached  
 Doct<sup>r</sup> Morgan desires that no Patent  
 Issue for this Land to Kennedy or his  
 Assigns - Adjudging that the latter prior  
 Orders for the same a part thereof  
 23 May 1774



A Tract of a Tract of Land Called Spring Farm  
 situate on Fishing Creek a bra of Bald Eagle Creek  
 in the County of Cumberland Surveyed the 26<sup>th</sup> Day  
 of Oct<sup>r</sup> 1769 to Robt Kennedy in pursuance of his  
 Order of Survey No 5705 Dated the 31<sup>st</sup> day of Aug-  
 ust 1769 Containing Two hundred & Eighty five  
 acres & allow<sup>ce</sup> of 6 pct

Chas Lukens DS

To John Lukens Esq<sup>r</sup>  
 Surveyor General

IN TESTIMONY that the above is a copy of the original remaining on file in  
 the Department of Internal Affairs of Pennsylvania, made  
 conformably to an Act of Assembly approved the 16th day of  
 February, 1833, I have hereunto set my Hand and caused  
 the Seal of said Department to be affixed at Harrisburg,  
 this Seventh day of February 1905.

*Loac D Brown*  
 Secretary of Internal Affairs.